

Specifications

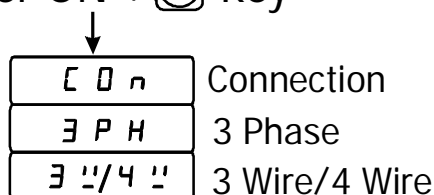
- 1) Model : MPD-19N
- 2) Display : 0.56" 3 digit, 3 line, 7 Segment LED Display
- 3) Size : 96 X 96 X 55 mm (Cutout: 92 X 92)
- 3) Accuracy : Class 1.0 (1% of FS +/- 1 Count)
- 4) Voltage Input : P-P : 50 to 500V AC P-P,
P-N : 30 to 300V AC P-N,
- 5) Current Input : 0.5 to 5 Amp AC direct or C.T. selectable
Upto 2000/5 ratio.
- 6) Aux Supply : 230V AC, 50 Hz
- 8) Parameters (Display) : Voltage P-P, R Y & B (3 Phase 3 Wire)
Voltage P-N, R Y & B (3 Phase 4 Wire)
Line Current , R Y & B

CT Selection

- 1) Press set key and power on unit to display CT ratio mode display. On immediately Releasing key, unit allows to edit CT ratio up to 2000.
- 2) CT Ratio change by using up & down key.
- 3) To save changes, power off the unit, and normally power on the instrument

Procedure to select connection

Power ON +  key

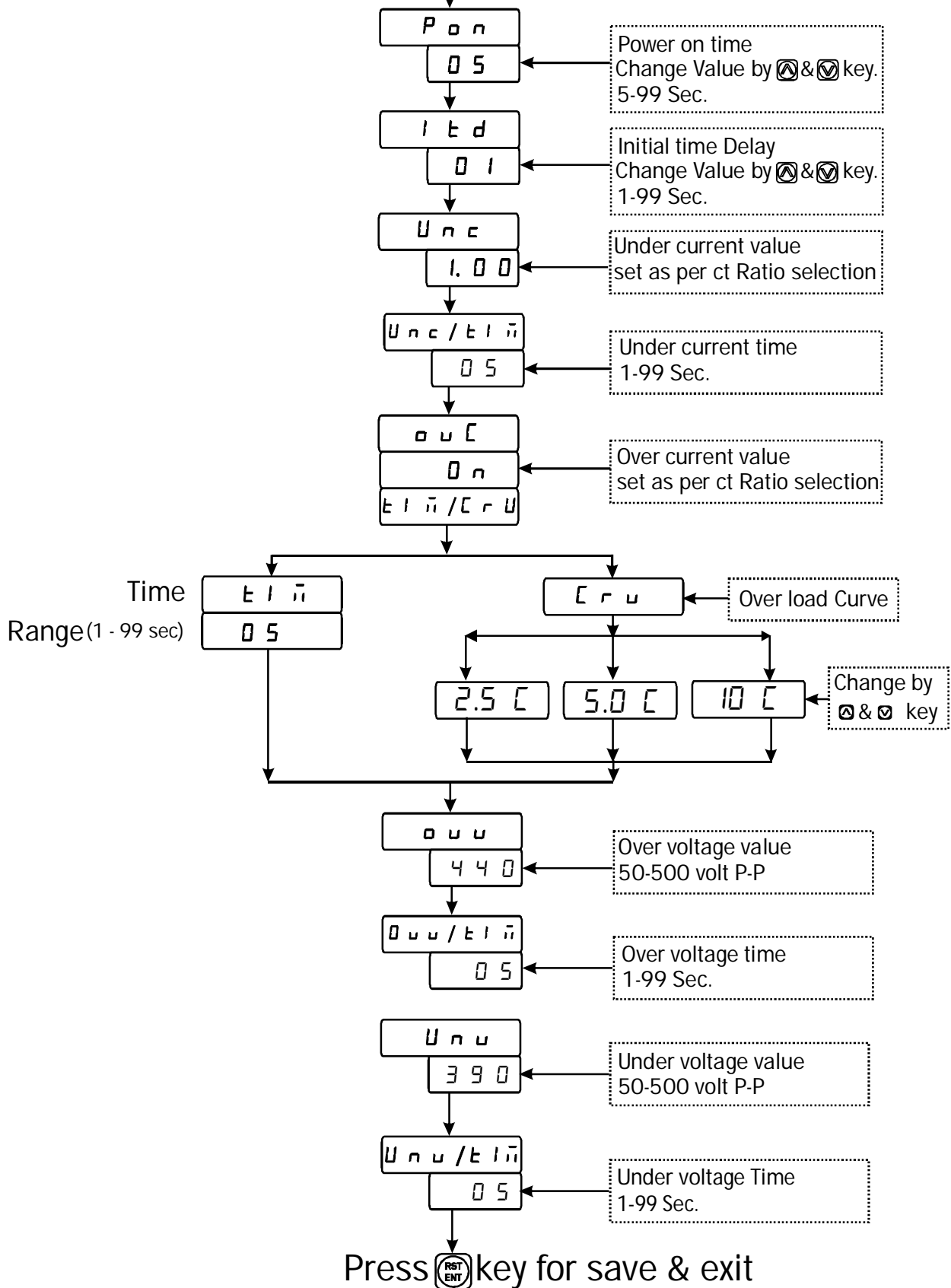


↓

Press  key for save & exit

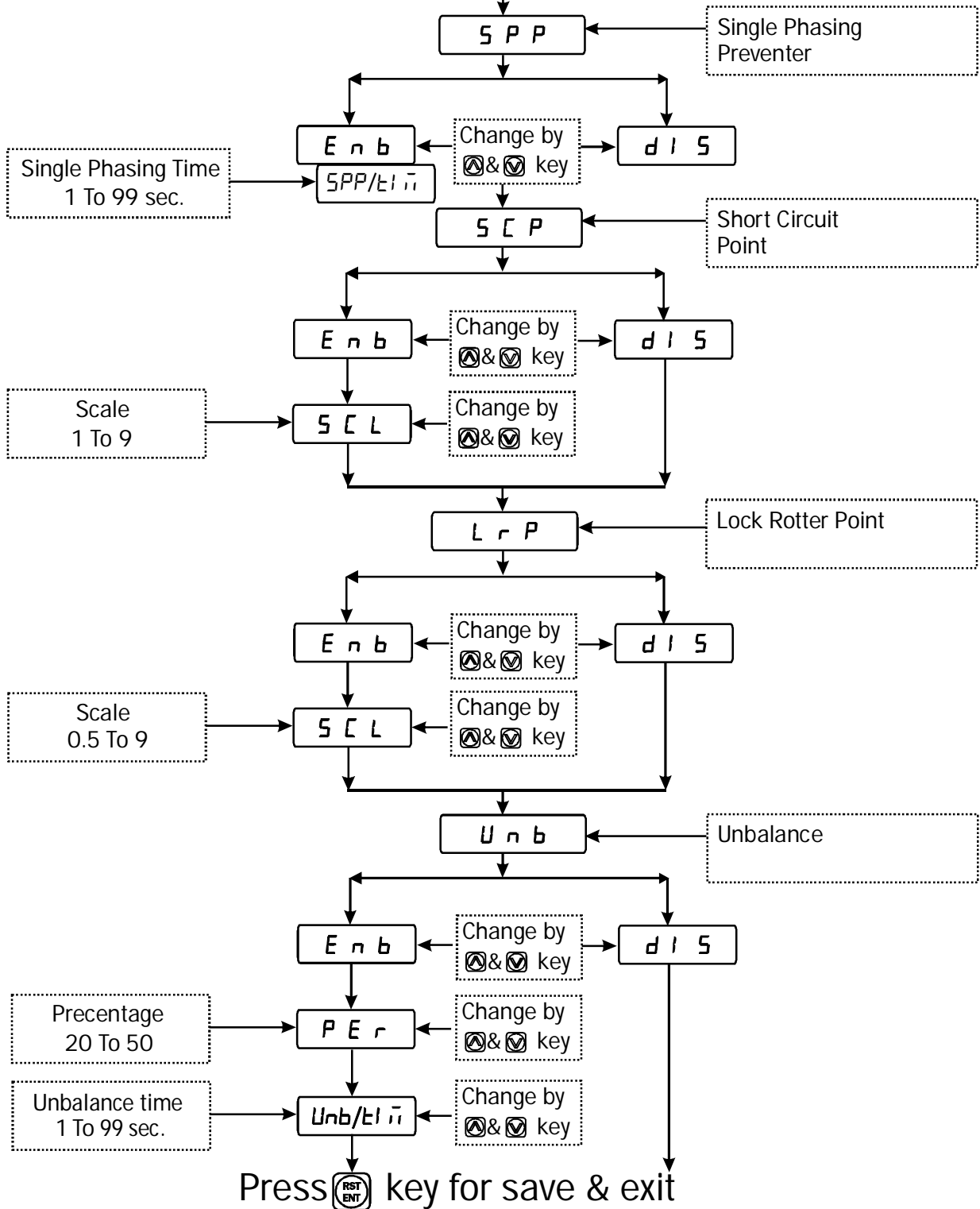
Procedure to set Program

Press  key +  key



Procedure to set parameter

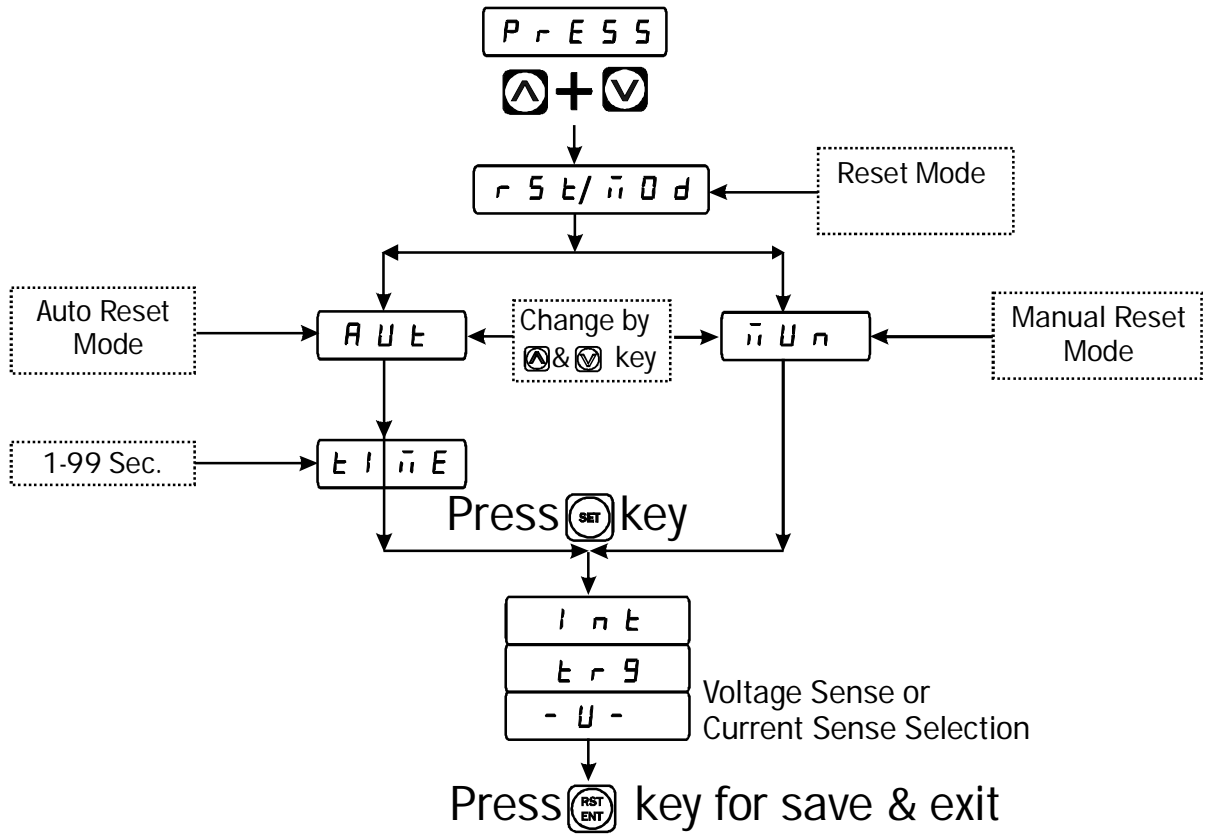
Press  key +  key



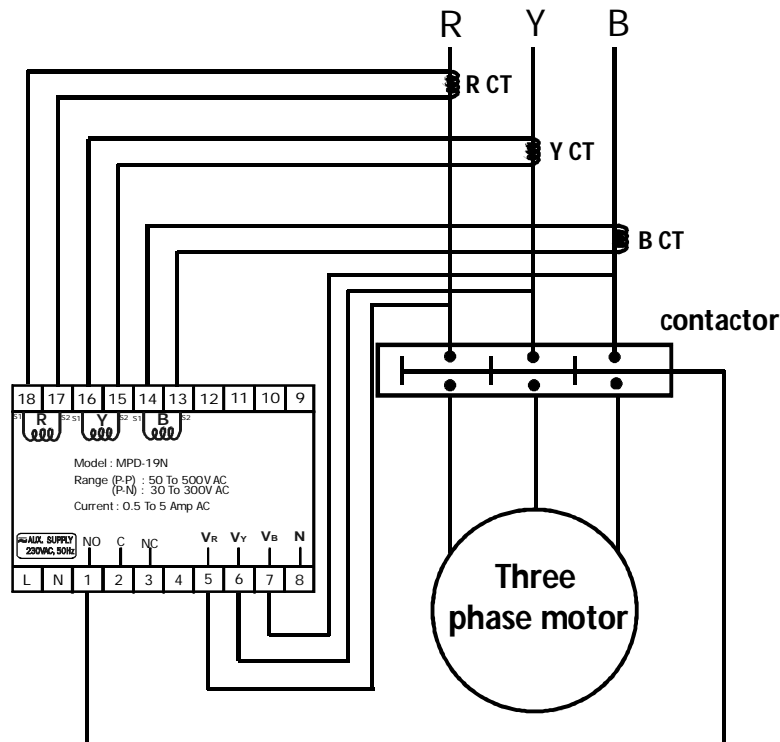
Tripping Facility

1) OVER CURRENT ($\overline{O} U \overline{C}$)	5) SHORT CIRCUIT ($\overline{S} \overline{C}$)
2) UNDER CURRENT ($\overline{U} n \overline{C}$)	6) SINGLE PHASING ($\overline{S} P P$) PREVENTER
3) OVER VOLTAGE ($\overline{O} v \overline{V}$)	7) UNBALANCE ($\overline{U} n b$)
4) UNDER VOLTAGE ($\overline{U} n v$)	8) Lock Roter Point ($\overline{L} r P$)

Reset Mode Selection



3-Wire Motor Connection Diagram



Product improvement and upgrade is a constant procedure. So for more updated operating information and Support, Please contact our Helping: 9978 9914 74 / 75 or Email at helpline@multispanindia.com